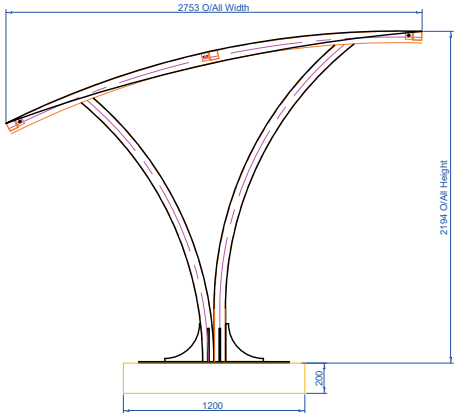
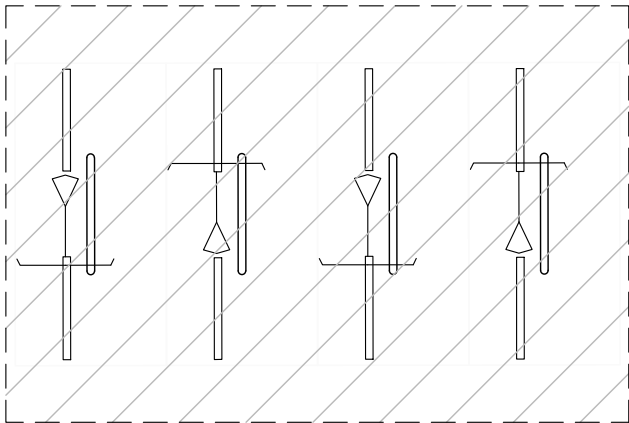


Front Elevation



Side Elevation

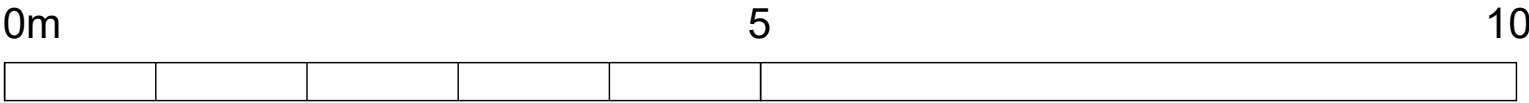


Plan including Sheffield cycle stands

Standard Unit Dimensions  
Width (overall): 2753mm  
Height: 2194mm (h-front)  
1513mm (h-rear)

Length with Capacity  
4120mm                      8 cycles

Features  
Robust modular construction  
Load bearing purlins  
Welded end frames  
Made from heavy-duty mild steel circular section  
Assembled with anti-tamper high strength bolts  
Anti-climb end frames  
Hot dip galvanized to BS EN ISO 1461:2009  
Weather resistant cladding



Scale Bar

A	06.11.24 MINOR AMENDMENTS
REVISIONS	^
CLIENT	WELCOME BREAK
PROJECT	BRIDGWATER EAST SERVICES, J24, M5 TA7 OAH
TITLE	CYCLE SHELTER
DATE	29.10.24
SCALE	1:50 @ A3
JOB ID	1516
DWG	73a